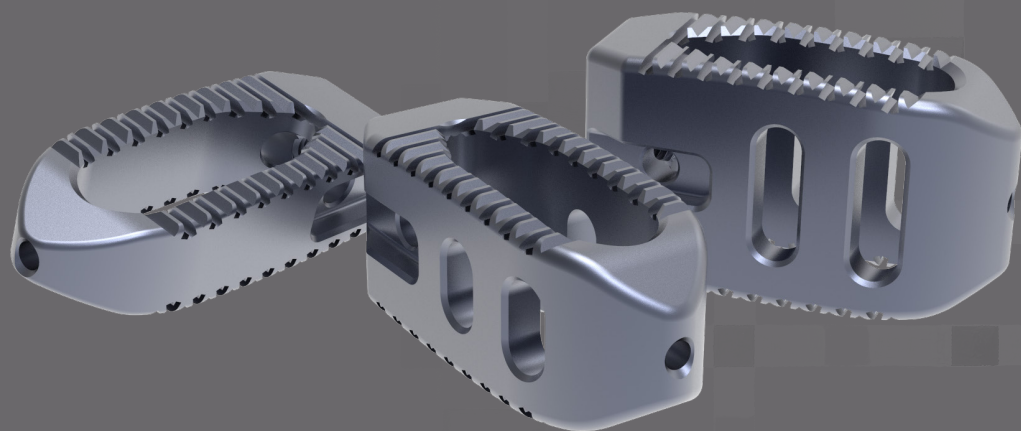


MONDRIAN™

TRANSFORAMINAL LUMBAR
INTERBODY FUSION DEVICES

MONDRIAN™ transforaminal lumbar cages are titanium lumbar interbody fusion implants designed to accommodate a wide range of patient anatomies and surgical preferences.



Large graft window allows for maximum graft volume and greater likelihood of fusion

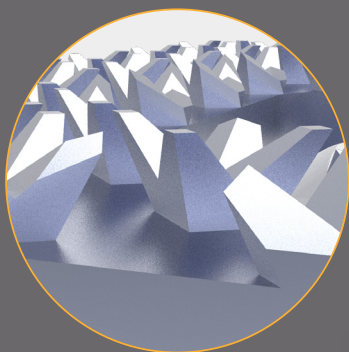
Curved design accommodates a wide variety of patient anatomies

Aggressive serrations ensure endplate fixation

Self distracting tip for ease of insertion

Bi-convex profile to maximize endplate contact

Lateral aperture for improved visualization via imaging



CTL Amedica's proprietary **TiCro®** design offers significantly greater surface area, improving endplate contact.

This unique surface geometry enhances bone interlocking properties and helps to ensure cage placement.



CTL AMEDICA
rethink what's possible®

MONDRIAN™ TLIF Straight Titanium Cage: W11 mm x L28mm

0 Degree	6 Degree	12 Degree	15 Degree*	
Part Number	Part Number	Part Number	Part Number	Height (mm)
127.1367	127.1487			7
127.1368	127.1488			8
127.1369	127.1489	127.1729		9
127.1370	127.1490	127.1730	127.1850	10
127.1371	127.1491	127.1731	127.1851	11
127.1372	127.1492	127.1732	127.1852	12
127.1373	127.1493	127.1733	127.1853	13
127.1374	127.1494	127.1734	127.1854	14
127.1375	127.1495	127.1735	127.1855	15
127.1376	127.1496	127.1736	127.1856	16

*available upon request

MONDRIAN™ TLIF Straight Titanium Cage: W11 mm x L32mm

0 Degree	6 Degree	12 Degree	15 Degree*	
Part Number	Part Number	Part Number	Part Number	Height (mm)
127.1407				7
127.1408	127.1528			8
127.1409	127.1529			9
127.1410	127.1530	127.1770		10
127.1411	127.1531	127.1771	127.1891	11
127.1412	127.1532	127.1772	127.1892	12
127.1413	127.1533	127.1773	127.1893	13
127.1414	127.1534	127.1774	127.1894	14
127.1415	127.1535	127.1775	127.1895	15
127.1416	127.1536	127.1776	127.1896	16

*available upon request



CTL AMERICA
rethink what's possible®