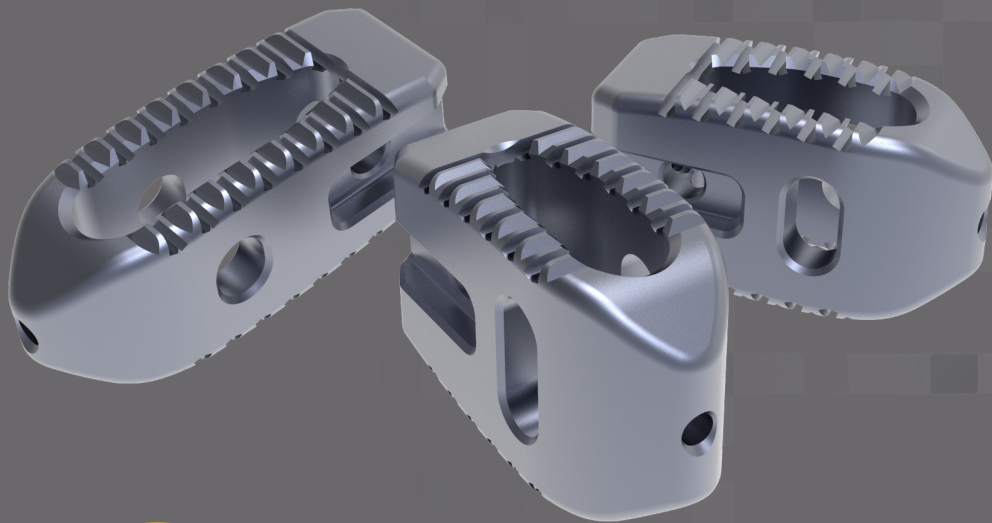


MONDRIAN™

POSTERIOR LUMBAR
INTERBODY FUSION DEVICES

MONDRIAN™ posterior lumbar cages are titanium lumbar interbody fusion implants designed to accommodate a wide range of patient anatomies and surgical preferences.



Large graft window allows for maximum graft volume and greater likelihood of fusion

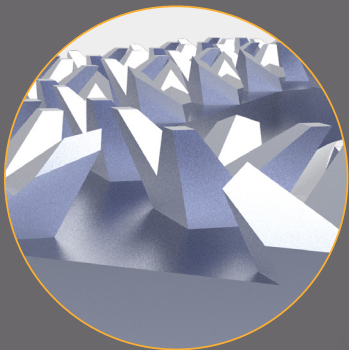
Implant designed to accommodate a wide variety of patient anatomies

Aggressive serrations ensure endplate fixation

Self distracting tip for ease of insertion

Bi-convex profile to maximize endplate contact

Lateral aperture for improved visualization via imaging



CTL Ametica's proprietary **TiCro®** design offers significantly greater surface area, improving endplate contact.

This unique surface geometry enhances bone interlocking properties and helps to ensure cage placement.



CTL AMEDICA
rethink what's possible®

MONDRIAN™ PLIF Straight Titanium Cage: W9mm x L22mm

0 Degree	6 Degree	12 Degree	15 Degree*	
Part Number	Part Number	Part Number	Part Number	Height (mm)
127.0707	127.0827	127.1067		7
127.0708	127.0828	127.1068	127.1188	8
127.0709	127.0829	127.1069	127.1189	9
127.0710	127.0830	127.1070	127.1190	10
127.0711	127.0831	127.1071	127.1191	11
127.0712	127.0832	127.1072	127.1192	12
127.0713	127.0833	127.1073	127.1193	13
127.0714	127.0834	127.1074	127.1194	14
127.0715	127.0835	127.1075	127.1195	15
127.0716	127.0836	127.1076	127.1196	16

*available upon request

MONDRIAN™ PLIF Straight Titanium Cage: W9mm x L26mm

0 Degree	6 Degree	12 Degree	15 Degree*	
Part Number	Part Number	Part Number	Part Number	Height (mm)
127.0747	127.0867			7
127.0748	127.0868	127.1108		8
127.0749	127.0869	127.1109	127.1229	9
127.0750	127.0870	127.1110	127.1230	10
127.0751	127.0871	127.1111	127.1231	11
127.0752	127.0872	127.1112	127.1232	12
127.0753	127.0873	127.1113	127.1233	13
127.0754	127.0874	127.1114	127.1234	14
127.0755	127.0875	127.1115	127.1235	15
127.0756	127.0876	127.1116	127.1236	16

*available upon request

