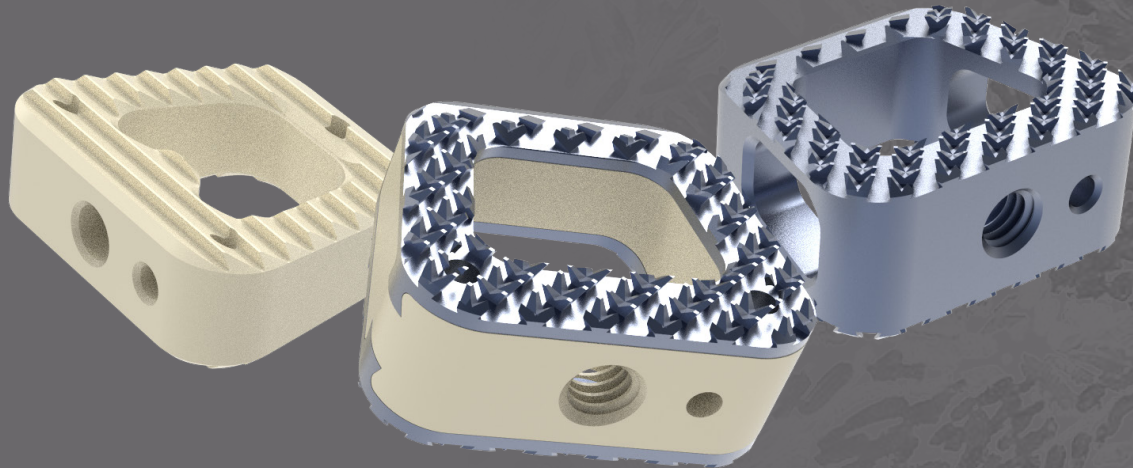


MATISSE™

ANTERIOR CERVICAL
INTERBODY FUSION DEVICES

The MATISSE™ ACIF cage platform is engineered to accommodate a wide range of patient anatomies and surgeon preferences and is available in various footprints, heights and lordotic angles.



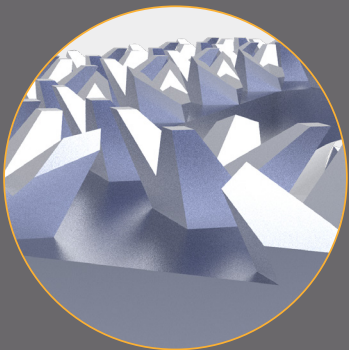
Design that accommodates various patient anatomies and resists migration

PEEK cages built with **distinct radiographic markers** helping to ensure proper implant placement

Large graft window allows for maximum graft volume

TiCro™-PEEK cages are manufactured with a **titanium end plate shell and radioluscent PEEK bodies** to promote adhesion and improved imaging

Tapered leading edge for ease of insertion



CTL Amedica's proprietary **TiCro®** design offers significantly greater surface area, improving endplate contact.

This unique surface geometry enhances bone interlocking properties and helps to ensure cage placement.



CTL AMEDICA
rethink what's possible®

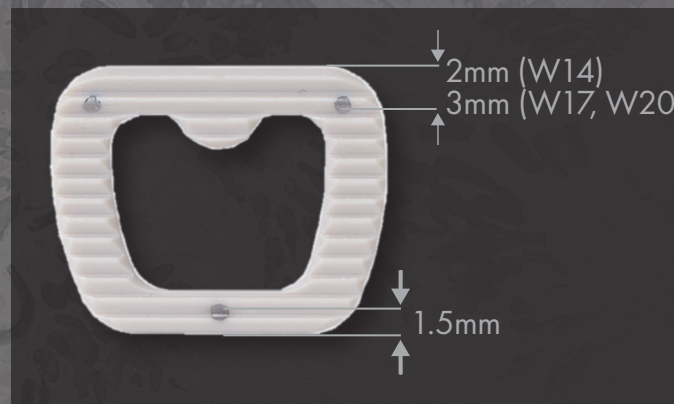
MATISSE™ W14 x L12mm Cages: 6 Degree

PEEK	TiCro™	TiCro-PEEK	
Part Number	Part Number	Part Number	Height
013.4115	013.0205		5
013.4116	013.0206	013.1406	6
013.4117	013.0207	013.1407	7
013.4118	013.0208	013.1408	8
013.4119	013.0209	013.1409	9
013.4120	013.0210	013.1410	10

MATISSE™ W17 x L14mm Cages: 6 Degree

PEEK	TiCro™	TiCro-PEEK	
Part Number	Part Number	Part Number	Height
013.4155	013.0605		5
013.4156	013.0606	013.1806	6
013.4157	013.0607	013.1807	7
013.4158	013.0608	013.1808	8
013.4159	013.0609	013.1809	9
013.4160	013.0610	013.1810	10

* 11 mm and 12mm heights additionally available



* 20mm x 16mm footprint additionally available upon request

