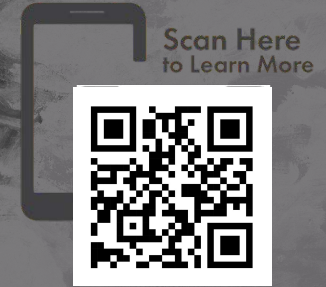


MONET™

ANTERIOR CERVICAL FUSION SYSTEM



The MONET™ Anterior Cervical Fusion system is designed for intra-operative flexibility. The cage component can be implanted in conjunction with the MONET™ supplemental fixation plates, making it a truly comprehensive Anterior Cervical Fusion solution.

Two-hole and four-hole plate configurations accommodate anatomical variation

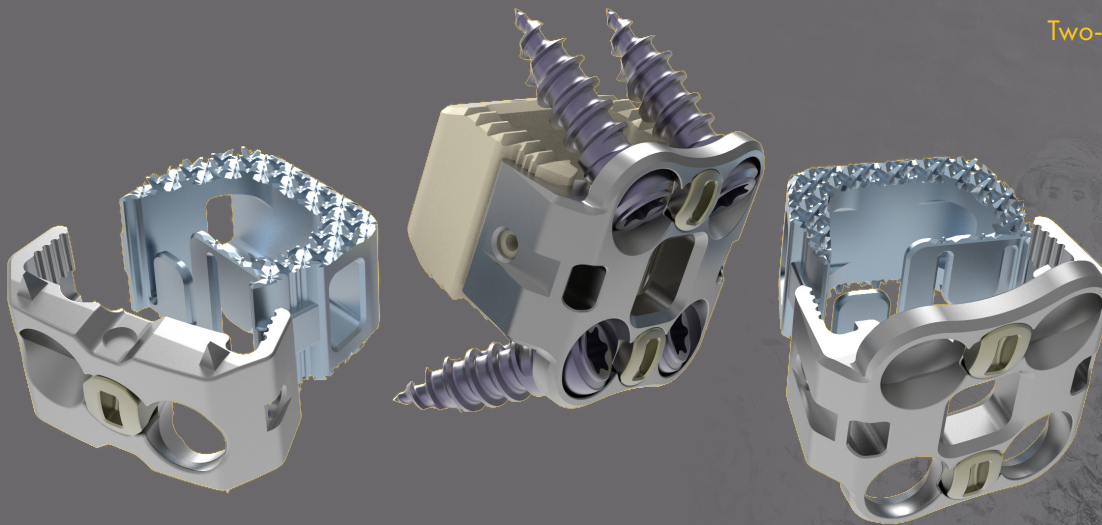
Torsional stabilizers enhance rotational stability (two-hole plate only)

Large graft window allows for maximum graft volume and greater likelihood of fusion

Efficient screw blocking mechanism

Tapered leading edge for ease of insertion

Multiple screw options



IMPLANT FOOTPRINTS AND SIZES

CAGE ONLY:

Small: W13 x L10mm

Medium: W15 x L11mm

Large: W17 x L13mm*

CAGE AND PLATE ASSEMBLY:

Small: W14 x L12mm

Medium: W17 x L14mm

Large: W20 x L16mm*

*Large footprint only available upon request



CTL AMERICA
rethink what's possible®

MONET™ ACIF Cage, Small & Medium

8 Degree	Size	
Part Number	S/M	Height (mm)
113.4206	S	6
113.4207	S	7
113.4208	S	8
013.4209	S	9
113.4210	S	10
113.4406	M	6
113.4407	M	7
113.4408	M	8
113.4409	M	9
113.4410	M	10

MONET™ ACIF Screw, 3.5mm Diameter

Fixed, Self Drilling	Fixed, Self Tapping	Variable, Self Drilling	Variable, Self Tapping	
Part Number	Part Number	Part Number	Part Number	Length (mm)
113.0512	113.0712	113.0112	113.0312	12
113.0514	113.0714	113.0114	113.0314	14
113.0516	113.0716	113.0116	113.0316	16
113.0518	113.0718	113.0118	113.0318	18
113.0520	113.0720	113.0120	113.0320	20

MONET™ ACIF Screw, 4.0mm Diameter

Fixed, Self Drilling	Fixed, Self Tapping	Variable, Self Drilling	Variable, Self Tapping	
Part Number	Part Number	Part Number	Part Number	Length (mm)
113.0612	113.0812	113.0212	113.0412	12
113.0614	113.0814	113.0214	113.0414	14
113.0616	113.0816	113.0216	113.0416	16
113.0618	113.0818	113.0218	113.0418	18
113.0620	113.0820	113.0220	113.0420	20

MONET™ ACIF TiCro™ Cage, Small & Medium

8 Degree	Size	
Part Number	S/M	Height (mm)
113.5206	S	6
113.5207	S	7
113.5208	S	8
013.5209	S	9
113.5210	S	10
113.5406	M	6
113.5407	M	7
113.5408	M	8
113.5409	M	9
113.5410	M	10

MONET™ ACIF Plate, Small & Medium

Two-Hole	Four-Hole	
Part Number	Part Number	Height (mm)
113.1106	113.1406	6
113.1107	113.1407	7
113.1108	113.1408	8
113.1109	113.1409	9
113.1110	113.1410	10
113.1206	113.1506	6
113.1207	113.1507	7
113.1208	113.1508	8
113.1209	113.1509	9
113.1210	113.1510	10

* 11mm and 12mm heights available upon request



CTL AMERICA
rethink what's possible®